

PHOSPHO-AMYLOID PRECURSOR PROTEIN (THR743) RABBIT MAB

货号: N263150

产品全名: Phospho-Amyloid Precursor Protein (Thr743) 兔单克隆抗体

基因符号 APP; A4; AD1; Amyloid beta A4 protein; ABPP; APPI; APP; Alzheimer disease amyloid protein; Cerebral vascular amyloid peptide; CVAP; PreA4; Protease nexin-II; PN-II

UNIPROT ID: P05067

背景: APP a cell surface receptor that influences neurite growth, neuronal adhesion and axonogenesis. Cleaved by secretases to form a number of peptides, some of which bind to the acetyltransferase complex Fe65/TIP60 to promote transcriptional activation.

抗原: A synthetic phosphopeptide corresponding to residues surrounding Thr743 of human Amyloid Precursor 蛋白

经过测试的应用: WB,ICC/IF,IP

推荐稀释比: WB: 1/500-1/1000 IF: 1/50-1/200 IP: 1/20

种属反应性: Rabbit

克隆性: Rabbit Monoclonal

克隆编号: R07-4D0

分子量: Calculated MW: 87 kDa; Observed MW: 100 kDa

亚型: IgG

纯化: Affinity Purified

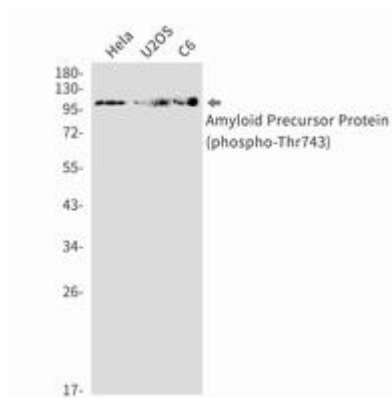
种属反应性: Human,Rat

Modification: Phosphorylated

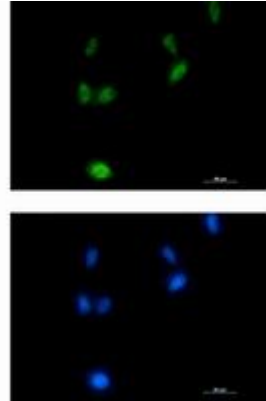
成分: PBS (without Mg²⁺ and Ca²⁺), pH 7.3 containing 50% glycerol, 0.5% BSA and 0.02% sodium azide

研究领域: Neuroscience&Alzheimer's disease

储存和运输: Store at -20°C. Avoid repeated freezing and thawing



Western blot analysis of Phospho-Amyloid Precursor Protein (Thr743) in HeLa, U2OS, C6 lysates using Phospho-Amyloid Precursor Protein (Thr743) antibody.



Immunocytochemistry analysis of Phospho-Amyloid Precursor Protein (Thr743) (green) in LNcap using Phospho-Amyloid Precursor Protein (Thr743) antibody, and DAPI (blue).