

PHOSHO-ERBB 2/EGFR (TYR1248/TYR1173) RABBIT MAB

货号: N261715

产品全名: Phosoho-ErbB 2/EGFR (Tyr1248/Tyr1173) 兔单克隆抗体

基因符号 ERBB2; HER2; MLN19; NEU; NGL; Receptor tyrosine-protein kinase erbB-2; Metastatic lymph node gene 19 protein; MLN 19; Proto-oncogene Neu; Proto-oncogene c-ErbB-2; Tyrosine kinase-type cell surface receptor HER2; p185erbB2; CD antigen CD340

UNIPROT ID: P04626

背景: This gene encodes a member of the epidermal growth factor (EGF) receptor family of receptor tyrosine kinases. This protein has no ligand binding domain of its own and therefore cannot bind growth factors. However, it does bind tightly to other ligand-bound EGF receptor family members to form a heterodimer, stabilizing ligand binding and enhancing kinase-mediated activation of downstream signalling pathways, such as those involving mitogen-activated protein kinase and phosphatidylinositol-3 kinase.

抗原: A synthetic phosphopeptide corresponding to residues surrounding Tyr1248 of human ErbB 2

经过测试的应用: WB,IP

推荐稀释比: WB: 1/500-1/1000 IP: 1/20

种属反应性: Rabbit

克隆性: Rabbit Monoclonal

克隆编号: R03-6A8

分子量: Calculated MW: 138 kDa; Observed MW: 180 kDa

亚型: IgG

纯化: Affinity Purified

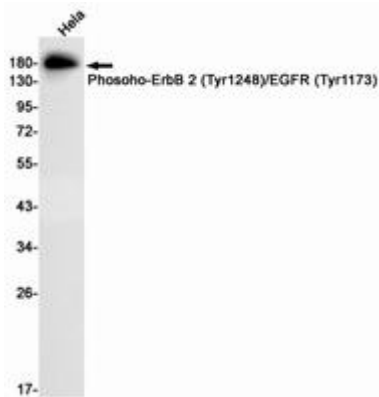
种属反应性: Human

Modification: Phosphorylated

成分: PBS (without Mg²⁺ and Ca²⁺), pH 7.3 containing 50% glycerol, 0.5% BSA and 0.02% sodium azide

研究领域: Cancer

储存和运输: Store at -20°C. Avoid repeated freezing and thawing



Western blot analysis of PhosphoErbB 2 (Tyr1248)/EGFR (Tyr1173) in HeLa lysates using PhosphoErbB 2/EGFR (Tyr1248/Tyr1173) antibody.