

## PAI1 RABBIT MAB

货号: N262667

产品全名: PAI1 兔单克隆抗体

基因符号 SERPINE1; PAI1; PLANHI; Plasminogen activator inhibitor 1; PAI; PAI-1; Endothelial plasminogen activator inhibitor; Serpin E1

**UNIPROT ID:** P05121

**背景:** This inhibitor acts as 'bait' for tissue plasminogen activator, urokinase, and protein C. Its rapid interaction with TPA may function as a major control point in the regulation of fibrinolysis.

**抗原:** Recombinant protein of human PAI1

**经过测试的应用:** WB, ICC/IF, IP

**推荐稀释比:** WB: 1/500-1/1000 IF: 1/50-1/200 IP: 1/20

**种属反应性:** Rabbit

**克隆性:** Rabbit Monoclonal

**克隆编号:** R05-6J6

**分子量:** Calculated MW: 45 kDa; Observed MW: 45 kDa

**亚型:** IgG

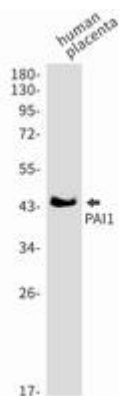
**纯化:** Affinity Purified

**种属反应性:** Human, Mouse and Rat

**成分:** PBS (without Mg<sup>2+</sup> and Ca<sup>2+</sup>), pH 7.3 containing 50% glycerol, 0.5% BSA and 0.02% sodium azide

**研究领域:** Cancer

**储存和运输:** Store at -20°C. Avoid repeated freezing and thawing



Western blot analysis of PAI1 in Human placenta lysates using PAI1 antibody.