

PABPN1 RABBIT PAB

货号: N225808

产品全名: PABPN1 兔多抗

基因符号 OPMD; PAB2; PAB1; PABP2; PABP-2

UNIPROT ID: Q86U42

背景: Involved in the 3'-end formation of mRNA precursors (pre-mRNA) by the addition of a poly(A) tail of 200-250 nt to the upstream cleavage product. Stimulates poly(A) polymerase (PAPOLA) conferring processivity on the poly(A) tail elongation reaction and controls also the poly(A) tail length. Increases the affinity of poly(A) polymerase for RNA.

抗原: A synthesized peptide derived from human PABPN1

经过测试的应用: WB,IHC-P,ICC/IF,IP,FC

推荐稀释比: WB: 1/500-1/1000 IHC: 1/50-1/100 IF: 1/50-1/200 IP: 1/20 FC: 1/50-1/100

种属反应性: Rabbit

克隆性: Rabbit Polyclonal

分子量: Calculated MW: 33 kDa; Observed MW: 49 kDa

亚型: IgG

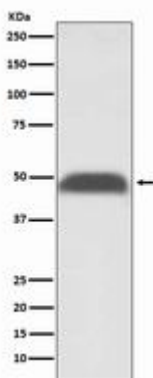
纯化: Affinity Chromatography

种属反应性: Human,Mouse

成分: PBS (without Mg²⁺ and Ca²⁺), pH 7.3 containing 50% glycerol, 0.5% BSA and 0.02% sodium azide

研究领域: Epigenetics and Nuclear Signaling

储存和运输: Store at -20°C. Avoid repeated freezing and thawing



Western blot analysis of PABPN1 in HeLa lysates using PABPN1 antibody.



Product Description

Pioneering GTPase and Oncogene Product Development since 2010
