

P38 (6F5) MOUSE MAB

货号: N261352

产品全名: p38 (6F5) 小鼠单抗

基因符号 MAPK14; CSBP; CSBP1; CSBP2; CSPB1; MXI2; SAPK2A; Mitogen-activated protein kinase 14; MAP kinase 14; MAPK 14; Cytokine suppressive anti-inflammatory drug-binding protein; CSAID-binding protein; CSBP; MAP kinase MXI2; MAX-interacting 蛋白

UNIPROT ID: Q16539

背景: Responds to activation by environmental stress, pro-inflammatory cytokines and lipopolysaccharide (LPS) by phosphorylating a number of transcription factors, such as ELK1 and ATF2 and several downstream kinases, such as MAPKAPK2 and MAPKAPK5. Plays a critical role in the production of some cytokines, for example IL-6.

抗原: Synthetic peptide conjugated to KLH.

经过测试的应用: IHC-P

推荐稀释比: IHC: 1/50-1/100

种属反应性: Mouse

克隆性: Mouse Monoclonal

克隆编号: 6F5-8A4-6G10

分子量: -

亚型: IgG1

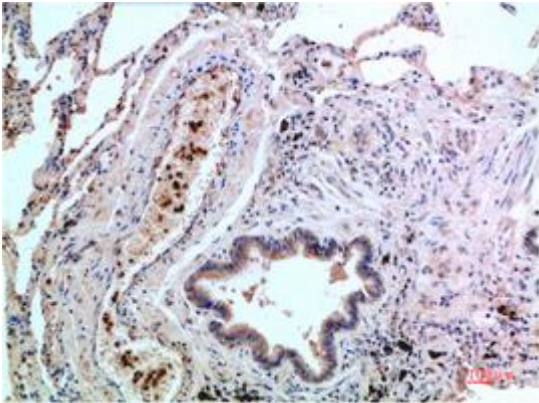
纯化: Affinity Purified

种属反应性: Human,Rat,Mouse

成分: PBS (without Mg²⁺ and Ca²⁺), pH 7.3 containing 50% glycerol, 0.5% BSA and 0.02% sodium azide

研究领域: Signal Transduction

储存和运输: Store at -20°C. Avoid repeated freezing and thawing



Immunohistochemistry analysis of paraffin-embedded Human Lung Carcinoma Tissue using p38 (6F5) antibody. High-pressure and temperature Sodium Citrate pH 6.0 was used for antigen retrieval.