

NOVA1 RABBIT MAB

货号: N262620

产品全名: Nova1 兔单克隆抗体

基因符号 Nova-1

UNIPROT ID: P51513

背景: May regulate RNA splicing or metabolism in a specific subset of developing neurons.

抗原: A synthetic peptide of human Nova1

经过测试的应用: WB,IHC-P

推荐稀释比: WB: 1/500-1/1000 IHC: 1/50-1/100

种属反应性: Rabbit

克隆性: Rabbit Monoclonal

克隆编号: R06-8K6

分子量: Calculated MW: 52 kDa; Observed MW: 52 kDa

亚型: IgG

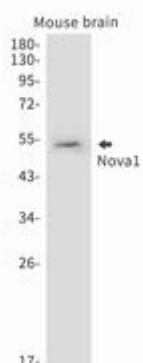
纯化: Affinity Purified

种属反应性: Human, Mouse and Rat

成分: PBS (without Mg²⁺ and Ca²⁺), pH 7.3 containing 50% glycerol, 0.5% BSA and 0.02% sodium azide

研究领域: Neuroscience

储存和运输: Store at -20°C. Avoid repeated freezing and thawing



Western blot analysis of Nova1 in rat lung lysates using Nova1 antibody.