

NEK6 RABBIT MAB

货号: N263449

产品全名: NEK6 兔单克隆抗体

基因符号 NEK6; NimA related protein kinase 6; SID61512

UNIPROT ID: Q9HC98

背景: Activated during M phase. Required for chromosome segregation at metaphase-anaphase transition and therefore for mitotic progression. Inhibition of activity results in apoptosis. Phosphorylates KIF11 to promote mitotic spindle formation.

抗原: A synthetic peptide of human NEK6

经过测试的应用: WB,IP

推荐稀释比: WB: 1/500-1/1000 IP: 1/20

种属反应性: Rabbit

克隆性: Rabbit Monoclonal

克隆编号: R08-5G7

分子量: Calculated MW: 36 kDa; Observed MW: 36 kDa

亚型: IgG

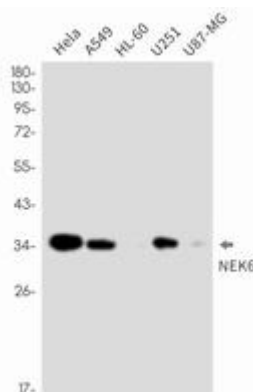
纯化: Affinity Purified

种属反应性: Human

成分: PBS (without Mg²⁺ and Ca²⁺), pH 7.3 containing 50% glycerol, 0.5% BSA and 0.02% sodium azide

研究领域: Cell Biology

储存和运输: Store at -20°C. Avoid repeated freezing and thawing



Western blot analysis of NEK6 in HeLa, A549, HL-60, U251, U87-MG lysates using NEK6 antibody.



Product Description

Pioneering GTPase and Oncogene Product Development since 2010
