

## MYL2 RABBIT MAB

货号: N262566

产品全名: MYL2 兔单克隆抗体

基因符号 Myosin regulatory light chain 2; ventricular/cardiac muscle isoform; MLC-2; MLC-2v

**UNIPROT ID:** P10916

背景: Myosin is composed of six polypeptide chains: two identical heavy chains and two pairs of light chains. Myosin light chain 2 (MLC2), also known as myosin regulatory light chain (MRLC), RLC, or LC20, has many isoforms depending on its distribution. In smooth muscle, MLC2 is phosphorylated at Thr18 and Ser19 by myosin light chain kinase (MLCK) in a Ca<sup>2+</sup>/calmodulin-dependent manner.

抗原: A synthetic peptide of human Myosin Light Chain 2

经过测试的应用: WB,IHC-P,IP

推荐稀释比: WB: 1/500-1/1000 IHC: 1/50-1/100 IP: 1/20

种属反应性: Rabbit

克隆性: Rabbit Monoclonal

克隆编号: R07-7C5

分子量: Calculated MW: 19 kDa; Observed MW: 19 kDa

亚型: IgG

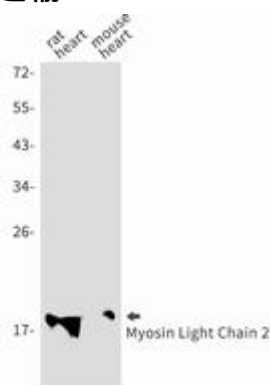
纯化: Affinity Purified

种属反应性: Mouse,Rat

成分: PBS (without Mg<sup>2+</sup> and Ca<sup>2+</sup>), pH 7.3 containing 50% glycerol, 0.5% BSA and 0.02% sodium azide

研究领域: Signal Transduction

储存和运输: Store at -20°C. Avoid repeated freezing and thawing



Western blot analysis of Myosin Light Chain 2 in rat heart, mouse heart lysates using MYL2 antibody.



# Product Description

Pioneering GTPase and Oncogene Product Development since 2010

---