

## MUCIN 1 RABBIT MAB

货号: N262551

产品全名: Mucin 1 兔单克隆抗体

基因符号 MUC1; PUM; Mucin-1; MUC-1; Breast carcinoma-associated antigen DF3; Carcinoma-associated mucin; Episialin; H23AG; Krebs von den Lungen-6; KL-6; PEMT; Peanut-reactive urinary mucin; PUM; Polymorphic epithelial mucin; PEM; Tumor-associated ep

**UNIPROT ID:** P15941

**背景:** This gene is a member of the mucin family and encodes a membrane bound, glycosylated phosphoprotein. This protein is anchored to the apical surface of many epithelia by a transmembrane domain, with the degree of glycosylation varying with cell type. The protein serves a protective function, binding to pathogens, as well as functioning in a cell signaling capacity.

**抗原:** A synthetic peptide of human MUC1

**经过测试的应用:** WB,IHC-F,IHC-P,ICC/IF,IP

**推荐稀释比:** WB: 1/500-1/1000 IHC: 1/50-1/100 IF: 1/50-1/200 IP: 1/20

**种属反应性:** Rabbit

**克隆性:** Rabbit Monoclonal

**克隆编号:** R02-3E1

**分子量:** Calculated MW: 122 kDa; Observed MW: 25 kDa

**亚型:** IgG

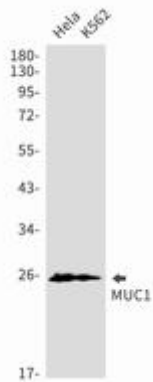
**纯化:** Affinity Purified

**种属反应性:** Human

**成分:** PBS (without Mg<sup>2+</sup> and Ca<sup>2+</sup>), pH 7.3 containing 50% glycerol, 0.5% BSA and 0.02% sodium azide

**研究领域:** Tags & Cell Markers

**储存和运输:** Store at -20°C. Avoid repeated freezing and thawing



Western blot analysis of MUC1 in HeLa, K562 lysates using Mucin 1 antibody.