

## MSH2 RABBIT MAB

货号: N262539

产品全名: MSH2 兔单克隆抗体

基因符号 DNA mismatch repair protein Msh2; MutS protein homolog 2

**UNIPROT ID:** P43246

背景: MSH2 (MutS homologue 2) forms the hMutS- $\alpha$  dimer with MSH6 and is an essential component of the mismatch repair process. hMutS- $\alpha$  is part of the BRCA1-associated surveillance complex (BASC), a complex that also contains BRCA1, MLH1, ATM, BLM, PMS2 proteins and the Rad50-Mre11-NBS1 complex.

抗原: A synthetic peptide of human MSH2

经过测试的应用: WB,IP

推荐稀释比: WB: 1/500-1/1000 IP: 1/20

种属反应性: Rabbit

克隆性: Rabbit Monoclonal

克隆编号: R03-1F3

分子量: Calculated MW: 105 kDa; Observed MW: 105 kDa

亚型: IgG

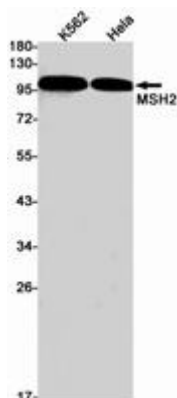
纯化: Affinity Purified

种属反应性: Human

成分: PBS (without Mg<sup>2+</sup> and Ca<sup>2+</sup>), pH 7.3 containing 50% glycerol, 0.5% BSA and 0.02% sodium azide

研究领域: Epigenetics and Nuclear Signaling

储存和运输: Store at -20°C. Avoid repeated freezing and thawing



Western blot analysis of MSH2 in K562, HeLa lysates using MSH2 antibody.



# Product Description

Pioneering GTPase and Oncogene Product Development since 2010

---