

MMP2 RABBIT MAB

货号: N262527

产品全名: MMP2 兔单克隆抗体

基因符号 MMP2; CLG4A; 72 kDa type IV collagenase; 72 kDa gelatinase; Gelatinase A; Matrix metalloproteinase-2; MMP-2; TBE-1

UNIPROT ID: P08253

背景: MMP2 Ubiquitous metalloproteinase that is involved in diverse functions such as remodeling of the vasculature, angiogenesis, tissue repair, tumor invasion, inflammation, and atherosclerotic plaque rupture. As well as degrading extracellular matrix proteins, can also act on several nonmatrix proteins such as big endothelial 1 and beta-type CGRP promoting vasoconstriction. Also cleaves KISS at a Gly-|-Leu bond. Appears to have a role in myocardial cell death pathways.

抗原: A synthetic peptide of human MMP2

经过测试的应用: WB, ICC/IF

推荐稀释比: WB: 1/500-1/1000 IF: 1/50-1/200

种属反应性: Rabbit

克隆性: Rabbit Monoclonal

克隆编号: R06-4H3

分子量: Calculated MW: 74 kDa; Observed MW: 72,64 kDa

亚型: IgG

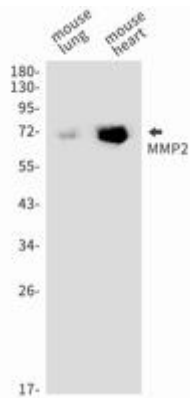
纯化: Affinity Purified

种属反应性: Mouse

成分: PBS (without Mg²⁺ and Ca²⁺), pH 7.3 containing 50% glycerol, 0.5% BSA and 0.02% sodium azide

研究领域: Cardiovascular

储存和运输: Store at -20°C. Avoid repeated freezing and thawing



Western blot analysis of MMP2 in mouse lung, mouse heart lysates using MMP2 antibody.