

MLH1 RABBIT MAB

货号: N263429

产品全名: MLH1 兔单克隆抗体

基因符号 MLH1; COCA2; DNA mismatch repair protein Mlh1; MutL protein homolog 1

UNIPROT ID: P40692

背景: This gene was identified as a locus frequently mutated in hereditary nonpolyposis colon cancer (HNPCC). It is a human homolog of the E. coli DNA mismatch repair gene mutL, consistent with the characteristic alterations in microsatellite sequences (RER+ phenotype) found in HNPCC. Alternatively spliced transcript variants encoding different isoforms have been described, but their full-length natures have not been determined.

抗原: Recombinant protein of human MLH1

经过测试的应用: WB, ICC/IF

推荐稀释比: WB: 1/500-1/1000 IF: 1/50-1/200

种属反应性: Rabbit

克隆性: Rabbit Monoclonal

克隆编号: R07-5D3

分子量: Calculated MW: 85 kDa; Observed MW: 85 kDa

亚型: IgG

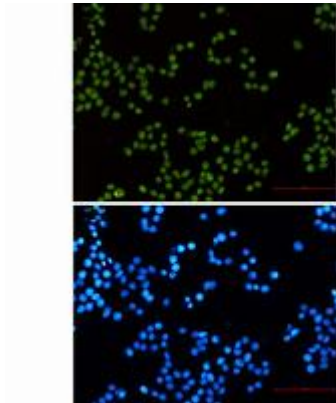
纯化: Affinity Purified

种属反应性: Human

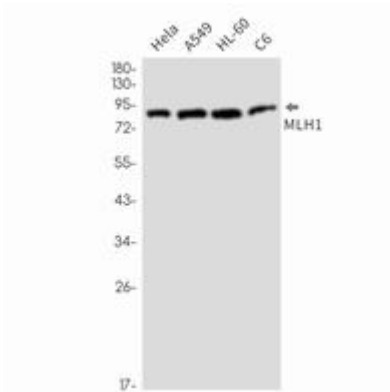
成分: PBS (without Mg²⁺ and Ca²⁺), pH 7.3 containing 50% glycerol, 0.5% BSA and 0.02% sodium azide

研究领域: Epigenetics and Nuclear Signaling

储存和运输: Store at -20°C. Avoid repeated freezing and thawing



Immunocytochemistry analysis of MLH1 (green) in hela using MLH1 antibody, and DAPI (blue)



Western blot analysis of MLH1 in HeLa, A549, HL-60, U2OS lysates using MLH1 antibody.