

MLF1 RABBIT PAB

货号: S223565

产品全名: MLF1 兔多抗

基因符号

UNIPROT ID: P58340 (Gene Accession - BC007045)

背景: This gene encodes an oncoprotein which is thought to play a role in the phenotypic determination of hemopoetic cells. Translocations between this gene and nucleophosmin have been associated with myelodysplastic syndrome and acute myeloid leukemia. Multiple transcript variants encoding different isoforms have been found for this gene.

抗原: Fusion protein of human MLF1

经过测试的应用: ELISA, WB

推荐稀释比: WB: 500-2000;ELISA: 5000-10000

种属反应性: Rabbit

克隆性: Rabbit Polyclonal

亚型: Immunogen-specific rabbit IgG

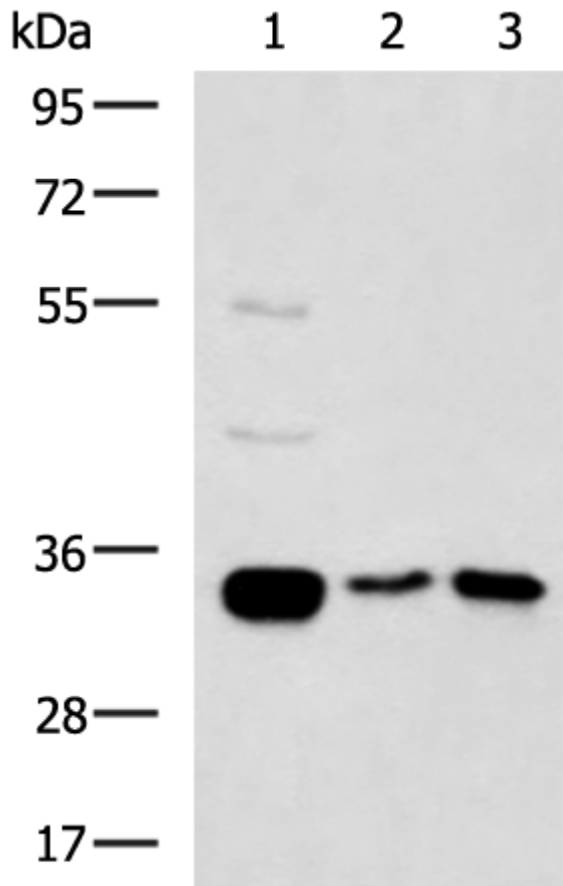
纯化: Antigen affinity purification

种属反应性: Human, Mouse

成分: PBS (without Mg²⁺ and Ca²⁺), pH 7.4, 150 mM NaCl, 0.05% Sodium Azide and 40% glycerol

研究领域: Cancer, Cardiovascular, Stem Cells

储存和运输: Store at -20°C. Avoid repeated freezing and thawing



Gel: 8%SDS-PAGE, Lysate: 40 μ g;

Lane 1-3: Mouse heart tissue, Human cerebrum tissue, Human cerebella tissue lysates ;

Primary antibody: 223565(MLF1 Antibody) at dilution 1/800;

Secondary antibody: HRP-conjugated Goat anti rabbit IgG at 1/5000 dilution;

Exposure time: 2 minutes