

## MKLP1 RABBIT PAB

货号: N225552

产品全名: MKLP1 兔多抗

基因符号 CHO1; KNSL5; MKLP1; MKLP-1

**UNIPROT ID:** Q02241

背景: Plus-end-directed motor enzyme that moves antiparallel microtubules in vitro. Localizes to the interzone of mitotic spindles.

抗原: A synthesized peptide derived from human MKLP1

经过测试的应用: WB, ICC/IF

推荐稀释比: WB: 1/500-1/1000 IF: 1/50-1/200

种属反应性: Rabbit

克隆性: Rabbit Polyclonal

分子量: Calculated MW: 110 kDa; Observed MW: 98 kDa

亚型: IgG

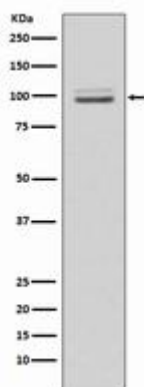
纯化: Affinity Chromatography

种属反应性: Human, Mouse and Rat

成分: PBS (without Mg<sup>2+</sup> and Ca<sup>2+</sup>), pH 7.3 containing 50% glycerol, 0.5% BSA and 0.02% sodium azide

研究领域: Cell Biology

储存和运输: Store at -20°C. Avoid repeated freezing and thawing



Western blot analysis of MKLP1 in HeLa lysates using MKLP1 antibody.