

## MITOCHONDRIAL RIBOSOMAL PROTEIN L11 RABBIT MAB

货号: N262519

产品全名: Mitochondrial Ribosomal Protein L11 兔单克隆抗体

基因符号 MRPL11; CGI-113; 39S ribosomal protein L11; mitochondrial; L11mt; MRP-L11

**UNIPROT ID:** Q9Y3B7

背景: This nuclear gene encodes a 39S subunit component of the mitochondrial ribosome. Alternative splicing results in multiple transcript variants. Pseudogenes for this gene are found on chromosomes 5 and 12.

抗原: A synthetic peptide of human Mitochondrial ribosomal protein L11

经过测试的应用: WB,IHC-F,IHC-P,ICC/IF

推荐稀释比: WB: 1/500-1/1000 IHC: 1/50-1/100 IF: 1/50-1/200

种属反应性: Rabbit

克隆性: Rabbit Monoclonal

克隆编号: R06-4H1

分子量: Calculated MW: 21 kDa; Observed MW: 21 kDa

亚型: IgG

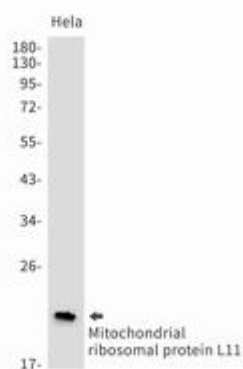
纯化: Affinity Purified

种属反应性: Human

成分: PBS (without Mg<sup>2+</sup> and Ca<sup>2+</sup>), pH 7.3 containing 50% glycerol, 0.5% BSA and 0.02% sodium azide

研究领域: Cell Biology

储存和运输: Store at -20°C. Avoid repeated freezing and thawing



Western blot analysis of Mitochondrial ribosomal protein L11 in HeLa lysates using Mitochondrial Ribosomal Protein L11 antibody.



# Product Description

Pioneering GTPase and Oncogene Product Development since 2010

---