

METABOTROPIC GLUTAMATE RECEPTOR 2 RABBIT PAB

货号: N225755

产品全名: Metabotropic Glutamate Receptor 2 兔多抗

基因符号 GRM2; GPRC1B; MGLUR2; Metabotropic glutamate receptor 2; mGluR2; GRM3; GPRC1C; MGLUR3; Metabotropic glutamate receptor 3; mGluR3

UNIPROT ID: Q14416

背景: G-protein coupled receptor for glutamate. Ligand binding causes a conformation change that triggers signaling via guanine nucleotide-binding proteins (G proteins) and modulates the activity of down-stream effectors, such as adenylate cyclase. Signaling inhibits adenylate cyclase activity. May mediate suppression of neurotransmission or may be involved in synaptogenesis or synaptic stabilization.

抗原: A synthesized peptide derived from human mGluR2

经过测试的应用: WB,IHC-P,ICC/IF

推荐稀释比: WB: 1/500-1/1000 IHC: 1/50-1/100 IF: 1/50-1/200

种属反应性: Rabbit

克隆性: Rabbit Polyclonal

分子量: Calculated MW: 96 kDa; Observed MW: 95,200 kDa

亚型: IgG

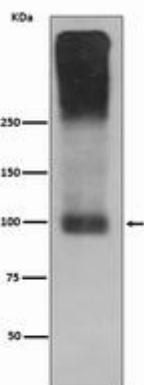
纯化: Affinity Chromatography

种属反应性: Human, Mouse and Rat

成分: PBS (without Mg²⁺ and Ca²⁺), pH 7.3 containing 50% glycerol, 0.5% BSA and 0.02% sodium azide

研究领域: Neuroscience

储存和运输: Store at -20°C. Avoid repeated freezing and thawing



Western blot analysis of mGluR2 in mouse brain lysates using Metabotropic Glutamate Receptor 2 antibody.



Product Description

Pioneering GTPase and Oncogene Product Development since 2010
