

## MENIN RABBIT MAB

货号: N261598

产品全名: Menin 兔单克隆抗体

基因符号 MEN1; SCG2; Menin

**UNIPROT ID:** O00255

**背景:** Menin, the protein product of the MEN1 gene, is a component of the mixed-lineage leukemia protein (MLL)-containing histone methyltransferase complex that facilitates methylation of histone H3 Lys4 to promote transcriptional activation. Menin functions to suppress proliferation of pancreatic islet cells, at least in part through MLL-mediated activation of the p18INK4c (p18) and p27CIP/KIP (p27) cyclin-dependent kinase inhibitor genes.

**抗原:** A synthetic peptide of human Menin

**经过测试的应用:** WB,IP

**推荐稀释比:** WB: 1/500-1/1000 IP: 1/20

**种属反应性:** Rabbit

**克隆性:** Rabbit Monoclonal

**克隆编号:** R05-6A9

**分子量:** Calculated MW: 68 kDa; Observed MW: 68 kDa

**亚型:** IgG

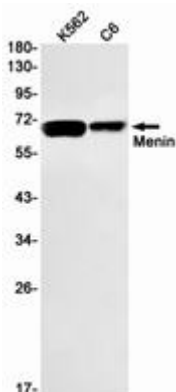
**纯化:** Affinity Purified

**种属反应性:** Human,Rat

**成分:** PBS (without Mg<sup>2+</sup> and Ca<sup>2+</sup>), pH 7.3 containing 50% glycerol, 0.5% BSA and 0.02% sodium azide

**研究领域:** Epigenetics and Nuclear Signaling

**储存和运输:** Store at -20°C. Avoid repeated freezing and thawing



Western blot analysis of Menin in K562, C6 lysates using Menin antibody.



# Product Description

Pioneering GTPase and Oncogene Product Development since 2010

---