

## MDH2 RABBIT MAB

货号: N262499

产品全名: MDH2 兔单克隆抗体

基因符号 MDH; MOR1; M-MDH; EIEE51; MGC:3559

**UNIPROT ID:** P40926

**背景:** Malate dehydrogenase catalyzes the reversible oxidation of malate to oxaloacetate, utilizing the NAD/NADH cofactor system in the citric acid cycle. The protein encoded by this gene is localized to the mitochondria and may play pivotal roles in the malate-aspartate shuttle that operates in the metabolic coordination between cytosol and mitochondria. Several transcript variants encoding different isoforms have been found for this gene.

**抗原:** A synthetic peptide of human MDH2

**经过测试的应用:** WB,IHC-P

**推荐稀释比:** WB: 1/500-1/1000 IHC: 1/50-1/100

**种属反应性:** Rabbit

**克隆性:** Rabbit Monoclonal

**克隆编号:** R06-4E2

**分子量:** Calculated MW: 36 kDa; Observed MW: 36 kDa

**亚型:** IgG

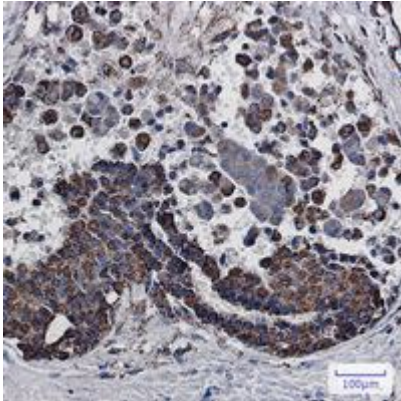
**纯化:** Affinity Purified

**种属反应性:** Human,Rat

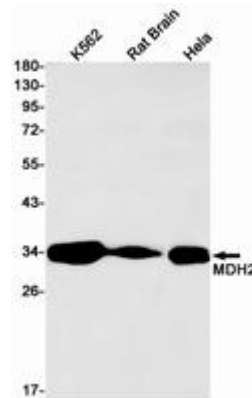
**成分:** PBS (without Mg<sup>2+</sup> and Ca<sup>2+</sup>), pH 7.3 containing 50% glycerol, 0.5% BSA and 0.02% sodium azide

**研究领域:** Tags & Cell Markers

**储存和运输:** Store at -20°C. Avoid repeated freezing and thawing



Immunohistochemistry analysis of paraffin-embedded Human breast cancer using MDH2 antibody. High-pressure and temperature Sodium Citrate pH 6.0 was used for antigen retrieval.



Western blot analysis of MDH2 in K562, rat Brain, Hela lysates using MDH2 antibody.