

MCM5 RABBIT MAB

货号: N261577

产品全名: MCM5 兔单克隆抗体

基因符号 CDC46; MCM5; MGC5315; P1 CDC46

UNIPROT ID: P33992

背景: MCM5 Belongs to the MCM family.

抗原: A synthetic peptide of human MCM5

经过测试的应用: WB,IHC-F,IHC-P,ICC/IF,IP

推荐稀释比: WB: 1/500-1/1000 IHC: 1/50-1/100 IF: 1/50-1/200 IP: 1/20

种属反应性: Rabbit

克隆性: Rabbit Monoclonal

克隆编号: R05-5E5

分子量: Calculated MW: 82 kDa; Observed MW: 82 kDa

亚型: IgG

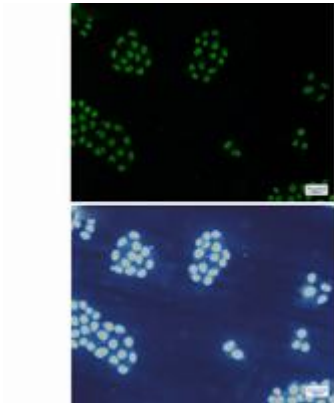
纯化: Affinity Purified

种属反应性: Human,Rat

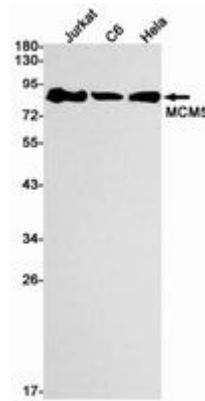
成分: PBS (without Mg²⁺ and Ca²⁺), pH 7.3 containing 50% glycerol, 0.5% BSA and 0.02% sodium azide

研究领域: Epigenetics and Nuclear Signaling

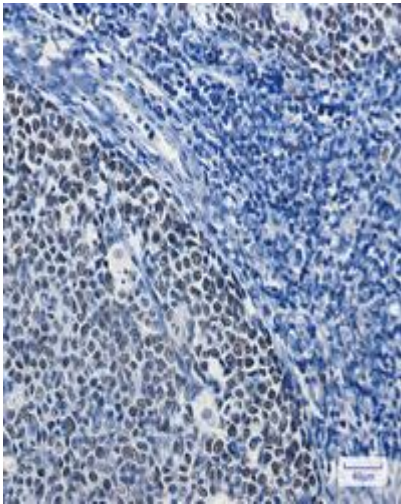
储存和运输: Store at -20°C. Avoid repeated freezing and thawing



Immunocytochemistry analysis of MCM5 (green) in HeLa using MCM5 antibody, and DAPI (blue)



Western blot analysis of MCM5 in Jurkat, C6, HeLa lysates using MCM5 antibody.



Immunohistochemistry analysis of paraffin-embedded Human tonsil using MCM5 antibody. High-pressure and temperature Sodium Citrate pH 6.0 was used for antigen retrieval.