

## MCM3 RABBIT MAB

货号: N261546

产品全名: MCM3 兔单克隆抗体

基因符号 MCM3; HCC5; P1-MCM3; P1.h; RLFB

**UNIPROT ID:** P25205

背景: Acts as component of the MCM2-7 complex (MCM complex) which is the putative replicative helicase essential for 'once per cell cycle' DNA replication initiation and elongation in eukaryotic cells.

抗原: A synthetic peptide of human MCM3

经过测试的应用: WB,IHC-F,IHC-P,ICC/IF

推荐稀释比: WB: 1/500-1/1000 IHC: 1/50-1/100 IF: 1/50-1/200

种属反应性: Rabbit

克隆性: Rabbit Monoclonal

克隆编号: R04-6B9

分子量: Calculated MW: 91 kDa; Observed MW: 100 kDa

亚型: IgG

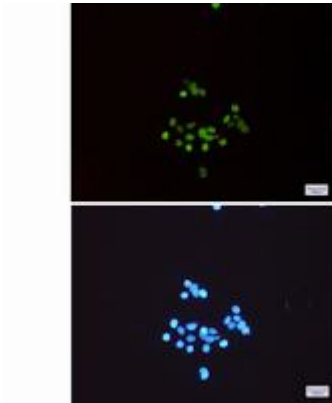
纯化: Affinity Purified

种属反应性: Human,Rat

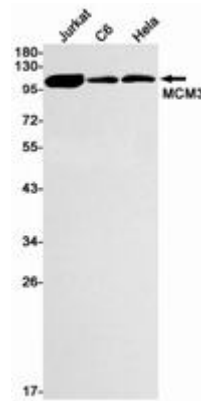
成分: PBS (without Mg<sup>2+</sup> and Ca<sup>2+</sup>), pH 7.3 containing 50% glycerol, 0.5% BSA and 0.02% sodium azide

研究领域: Epigenetics and Nuclear Signaling

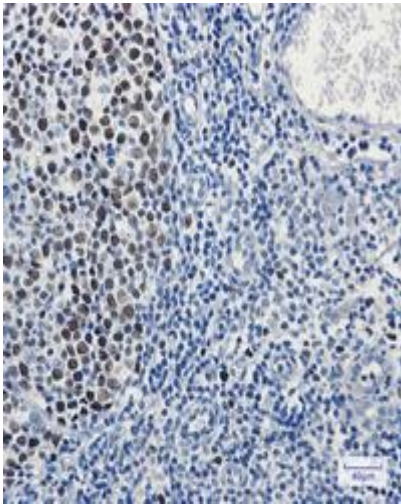
储存和运输: Store at -20°C. Avoid repeated freezing and thawing



Immunocytochemistry analysis of MCM3(green) in HeLa using MCM3 antibody, and DAPI(blue)



Western blot analysis of MCM3 in Jurkat, C6, HeLa lysates using MCM3 antibody.



Immunohistochemistry analysis of paraffin-embedded Human tonsil using MCM3 antibody. High-pressure and temperature Sodium Citrate pH 6.0 was used for antigen retrieval.