

## MAT1A RABBIT MAB

货号: N262491

产品全名: MAT1A 兔单克隆抗体

基因符号 MAT; SAMS; MATA1; SAMSI; MAT1A

**UNIPROT ID:** Q00266

**背景:** This gene catalyzes a two-step reaction that involves the transfer of the adenosyl moiety of ATP to methionine to form S-adenosylmethionine and triphosphosphate, which is subsequently cleaved to PPI and Pi. S-adenosylmethionine is the source of methyl groups for most biological methylations. The encoded protein is found as a homotetramer (MAT I) or a homodimer (MAT III) whereas a third form, MAT II (gamma), is encoded by the MAT2A gene. Mutations in this gene are associated with methionine adenosyltransferase deficiency.

**抗原:** A synthetic peptide of human MAT1A

**经过测试的应用:** WB,IP

**推荐稀释比:** WB: 1/500-1/1000 IP: 1/20

**种属反应性:** Rabbit

**克隆性:** Rabbit Monoclonal

**克隆编号:** R09-9C8

**分子量:** Calculated MW: 44 kDa; Observed MW: 44 kDa

**亚型:** IgG

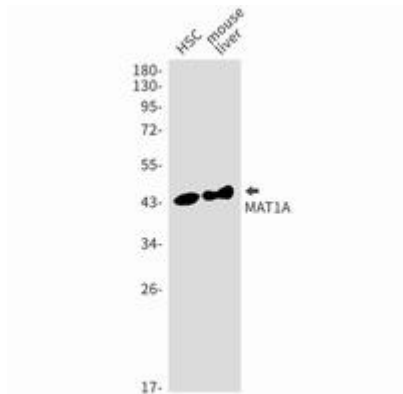
**纯化:** Affinity Purified

**种属反应性:** Human, Mouse and Rat

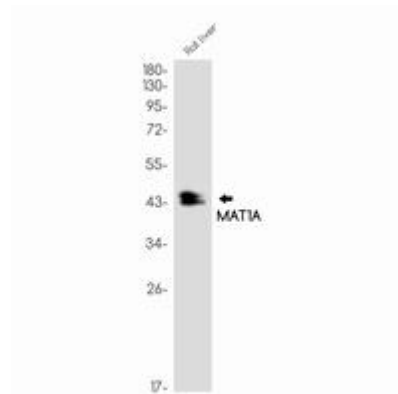
**成分:** PBS (without Mg<sup>2+</sup> and Ca<sup>2+</sup>), pH 7.3 containing 50% glycerol, 0.5% BSA and 0.02% sodium azide

**研究领域:** Signal Transduction

**储存和运输:** Store at -20°C. Avoid repeated freezing and thawing



Western blot analysis of MAT1A in HSC, mouse liver lysates using MAT1A antibody.



Western blot analysis of MAT1A in rat liver lysates using MAT1A antibody.