

MAGEC2 RABBIT MAB

货号: N261642

产品全名: MAGEC2 兔单克隆抗体

基因符号 CT10,MAGE-C2 antigen,MAGE-E1 antigen,MAGEC2,HCA587,
MAGEE1

UNIPROT ID: Q9UBF1

背景: Proposed to enhance ubiquitin ligase activity of RING-type zinc finger-containing E3 ubiquitin-protein ligases.

抗原: Recombinant protein of human MAGEE1

经过测试的应用: WB,IHC-P,IP

推荐稀释比: WB: 1/500-1/1000 IHC: 1/50-1/100 IP: 1/20

种属反应性: Rabbit

克隆性: Rabbit Monoclonal

克隆编号: R04-1B9

分子量: Calculated MW: 41 kDa; Observed MW: 55 kDa

亚型: IgG

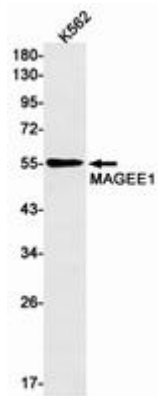
纯化: Affinity Purified

种属反应性: Human,Mouse

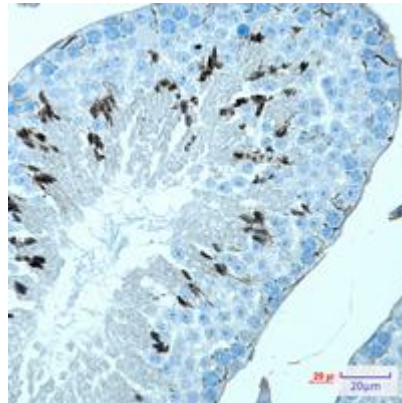
成分: PBS (without Mg²⁺ and Ca²⁺), pH 7.3 containing 50% glycerol,
0.5% BSA and 0.02% sodium azide

研究领域: -

储存和运输: Store at -20°C. Avoid repeated freezing and thawing



Western blot analysis of MAGEE1 in K562 lysates using MAGEE1 antibody.



Immunohistochemistry analysis of paraffin-embedded mouse testis using MAGEE2 antibody. High-pressure and temperature Sodium Citrate pH 6.0 was used for antigen retrieval.