

MACRO H2A.1 RABBIT MAB

货号: N262483

产品全名: Macro H2A.1 兔单克隆抗体

基因符号 H2A.y; H2A/y; mH2A1; H2AF12M; MACROH2A1.1; macroH2A1.2

UNIPROT ID: O75367

背景: Involved in stable X chromosome inactivation. Inhibits the binding of transcription factors and interferes with the activity of remodeling SWI/SNF complexes. Inhibits histone acetylation by EP300 and recruits class I HDACs, which induces an hypoacetylated state of chromatin.

抗原: A synthetic peptide of human macroH2A.1

经过测试的应用: WB, ICC/IF

推荐稀释比: WB: 1/500-1/1000 IF: 1/50-1/200

种属反应性: Rabbit

克隆性: Rabbit Monoclonal

克隆编号: R04-8E5

分子量: Calculated MW: 40 kDa; Observed MW: 40 kDa

亚型: IgG

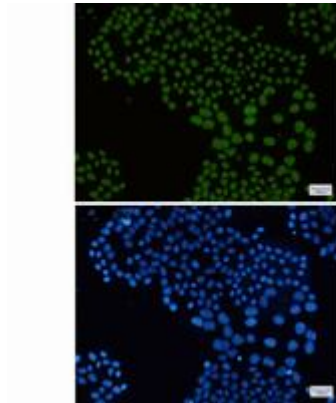
纯化: Affinity Purified

种属反应性: Mouse, Rat

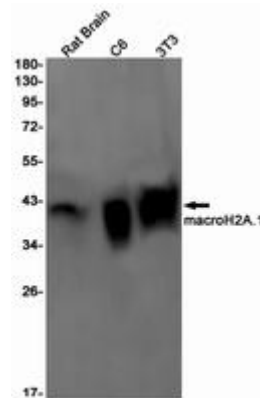
成分: PBS (without Mg²⁺ and Ca²⁺), pH 7.3 containing 50% glycerol, 0.5% BSA and 0.02% sodium azide

研究领域: Epigenetics and Nuclear Signaling

储存和运输: Store at -20°C. Avoid repeated freezing and thawing



Immunocytochemistry analysis of macroH2A.1 (green) in HeLa using macroH2A.1 antibody, and DAPI (blue)



Western blot analysis of macroH2A.1 in rat Brain, C6, 3T3 lysates using Macro H2A.1 antibody.