

M-CSF RABBIT MAB

货号: N262497

产品全名: M-CSF 兔单克隆抗体

基因符号 CSF1; Macrophage colony-stimulating factor 1; CSF-1; M-CSF; MCSF; Lanimostim

UNIPROT ID: P09603

背景: CSF1, also known as MCSF, is a four- α -helical bundle cytokine that controls the production, differentiation, and function of macrophages. The active form of the protein is found extracellularly as a disulfide-linked homodimer, and is thought to be produced by proteolytic cleavage of membrane-bound precursors. This protein may be involved in development of the placenta.

抗原: A synthetic peptide of human M-CSF

经过测试的应用: WB, IHC-F, IHC-P, ICC/IF

推荐稀释比: WB: 1/500-1/1000 IHC: 1/50-1/100 IF: 1/50-1/200

种属反应性: Rabbit

克隆性: Rabbit Monoclonal

克隆编号: R05-4B6

分子量: Calculated MW: 60 kDa; Observed MW: 43 kDa

亚型: IgG

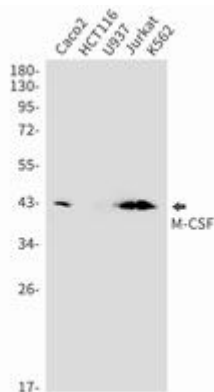
纯化: Affinity Purified

种属反应性: Human

成分: PBS (without Mg²⁺ and Ca²⁺), pH 7.3 containing 50% glycerol, 0.5% BSA and 0.02% sodium azide

研究领域: Immunology

储存和运输: Store at -20°C. Avoid repeated freezing and thawing



Western blot analysis of M-CSF in Caco2, HCT116, U937, Jurkat, K562 lysates using M-CSF antibody.



Product Description

Pioneering GTPase and Oncogene Product Development since 2010
