

LYVE1 RABBIT MAB

货号: N262482

产品全名: LYVE1 兔单克隆抗体

基因符号 CRSBP-1; Extracellular link domain-containing protein 1

UNIPROT ID: Q8BHC0

背景: Ligand-specific transporter trafficking between intracellular organelles (TGN) and the plasma membrane. Plays a role in autocrine regulation of cell growth mediated by growth regulators containing cell surface retention sequence binding (CRS).

抗原: Recombinant protein of mouse LYVE1

经过测试的应用: WB,IHC-P,IP

推荐稀释比: WB: 1/500-1/1000 IHC: 1/50-1/100 IP: 1/20

种属反应性: Rabbit

克隆性: Rabbit Monoclonal

克隆编号: R03-3C1

分子量: Calculated MW: 35 kDa; Observed MW: 35-70 kDa

亚型: IgG

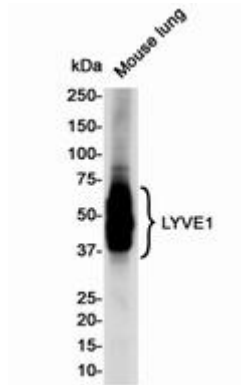
纯化: Affinity Purified

种属反应性: Human,Mouse

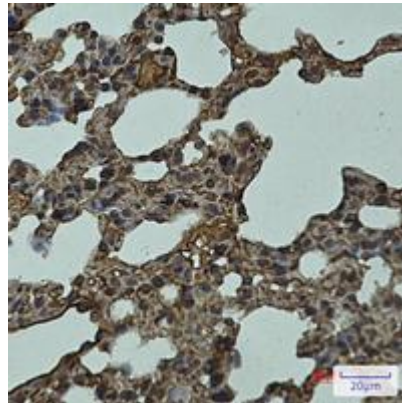
成分: PBS (without Mg²⁺ and Ca²⁺), pH 7.3 containing 50% glycerol, 0.5% BSA and 0.02% sodium azide

研究领域: Cardiovascular

储存和运输: Store at -20°C. Avoid repeated freezing and thawing



Western blot analysis of LYVE1 in mouse Lung lysates using LYVE1 antibody.



Immunohistochemistry analysis of paraffin-embedded mouse lung using LYVE1 antibody. High-pressure and temperature Sodium Citrate pH 6.0 was used for antigen retrieval.