

LYMPHOTACTIN RABBIT PAB

货号: N225184

产品全名: Lymphotactin 兔多抗

基因符号 XCL1; LTN; SCYCL; Lymphotactin; ATAC; C motif chemokine 1; Cytokine SCM-1; Lymphotaxin; SCM-1-alpha; Small-inducible cytokine C1; XC chemokine ligand 1; XCL2; SCYC2; Cytokine SCM-1 beta; C motif chemokine 2; XC chemokine ligand 2

UNIPROT ID: P47992/Q9UBD3

背景: Chemotactic activity for lymphocytes but not for monocytes or neutrophils. In thymus, mediates medullary accumulation of thymic dendritic cells and contributes to regulatory T cell development, playing a role in self-tolerance establishment.

抗原: The antiserum was produced against synthesized peptide derived from the Internal region of human XCL1/XCL2. AA range:51-100

经过测试的应用: WB,ELISA

推荐稀释比: WB: 1/500-1/1000 ELISA: 1/10000

种属反应性: Rabbit

克隆性: Rabbit Polyclonal

分子量: Calculated MW: 13 kDa; Observed MW: 13 kDa

亚型: IgG

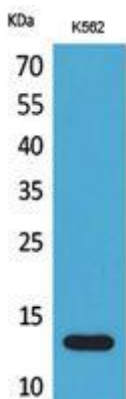
纯化: Affinity Purified

种属反应性: Human

成分: PBS (without Mg²⁺ and Ca²⁺), pH 7.3 containing 50% glycerol, 0.5% BSA and 0.02% sodium azide

研究领域: Immunology

储存和运输: Store at -20°C. Avoid repeated freezing and thawing



Western blot analysis of Lymphotactin in K562 lysates using Lymphotactin antibody.



Product Description

Pioneering GTPase and Oncogene Product Development since 2010
