

LRG1 RABBIT MAB

货号: N262477

产品全名: LRG1 兔单克隆抗体

基因符号 LRG1; LRG; Leucine-rich alpha-2-glycoprotein; LRG

UNIPROT ID: P02750

背景: Transforming growth factor beta receptor binding.

抗原: A synthetic peptide of human LRG1

经过测试的应用: WB,IHC-P,IP

推荐稀释比: WB: 1/500-1/1000 IHC: 1/50-1/100 IP: 1/20

种属反应性: Rabbit

克隆性: Rabbit Monoclonal

克隆编号: R06-413

分子量: Calculated MW: 38 kDa; Observed MW: 48 kDa

亚型: IgG

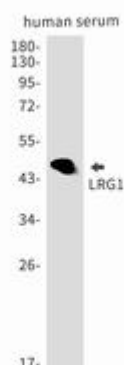
纯化: Affinity Purified

种属反应性: Human

成分: PBS (without Mg²⁺ and Ca²⁺), pH 7.3 containing 50% glycerol, 0.5% BSA and 0.02% sodium azide

研究领域: Immunology

储存和运输: Store at -20°C. Avoid repeated freezing and thawing



Western blot analysis of LRG1 in Human serum lysates using LRG1 antibody.