

## LMO2 RABBIT PAB

货号: N225842

产品全名: LMO2 兔多抗

基因符号 TTG2; LMO-2; RBTN2; RHOM2; RBTN1

**UNIPROT ID:** P25791

背景: Acts with TAL1/SCL to regulate red blood cell development. Also acts with LDB1 to maintain erythroid precursors in an immature state.

抗原: A synthesized peptide derived from human LMO2

经过测试的应用: WB,IP,FC

推荐稀释比: WB: 1/500-1/1000 IP: 1/20 FC: 1/50-1/100

种属反应性: Rabbit

克隆性: Rabbit Polyclonal

分子量: Calculated MW: 18 kDa; Observed MW: 18 kDa

亚型: IgG

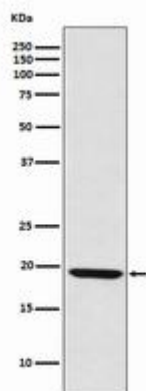
纯化: Affinity Chromatography

种属反应性: Human, Mouse and Rat

成分: PBS (without Mg<sup>2+</sup> and Ca<sup>2+</sup>), pH 7.3 containing 50% glycerol, 0.5% BSA and 0.02% sodium azide

研究领域: Cardiovascular

储存和运输: Store at -20°C. Avoid repeated freezing and thawing



Western blot analysis of LMO2 in Raji lysates using LMO2 antibody.