

LMAN1 RABBIT MAB

货号: N263408

产品全名: LMAN1 兔单克隆抗体

基因符号 ERGIC5; F5F8D; FMFD1; Gp58; Lman1; MCFD1; MR60

UNIPROT ID: P49257

背景: Mannose-specific lectin. May recognize sugar residues of glycoproteins, glycolipids, or glycosylphosphatidyl inositol anchors and may be involved in the sorting or recycling of proteins, lipids, or both. The LMAN1-MCFD2 complex forms a specific cargo receptor for the ER-to-Golgi transport of selected proteins.

抗原: A synthetic peptide of human LMAN1

经过测试的应用: WB,IHC-P

推荐稀释比: WB: 1/500-1/1000 IHC: 1/50-1/100

种属反应性: Rabbit

克隆性: Rabbit Monoclonal

克隆编号: R03-5C3

分子量: Calculated MW: 58 kDa; Observed MW: 58 kDa

亚型: IgG

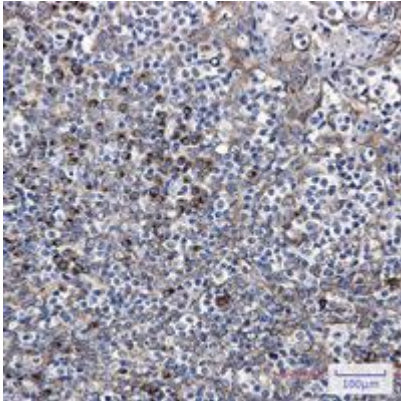
纯化: Affinity Purified

种属反应性: Human

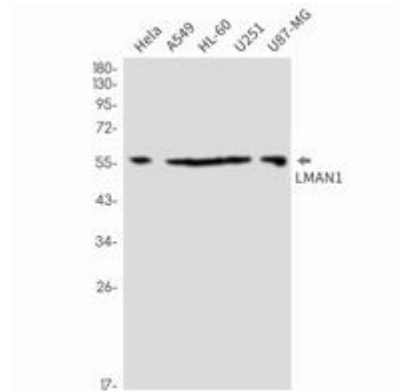
成分: PBS (without Mg²⁺ and Ca²⁺), pH 7.3 containing 50% glycerol, 0.5% BSA and 0.02% sodium azide

研究领域: Signal Transduction

储存和运输: Store at -20°C. Avoid repeated freezing and thawing



Immunohistochemistry analysis of paraffin-embedded Human tonsil using LMAN1 antibody. High-pressure and temperature Sodium Citrate pH 6.0 was used for antigen retrieval.



Western blot analysis of LMAN1 in Hela, A549, HL-60, U251, U87-MG lysates using LMAN1 antibody.