

LI CADHERIN RABBIT PAB

货号: N226043

产品全名: LI Cadherin 兔多抗

基因符号 Cadherin 17; Cdh17; HPT 1; LI-cadherin; Liver Cadherin; liver inTine cadherin

UNIPROT ID: Q12864

背景: Cadherins are calcium dependent cell adhesion proteins. They preferentially interact with themselves in a homophilic manner in connecting cells; cadherins may thus contribute to the sorting of heterogeneous cell types. LI-cadherin may have a role in the morphological organization of liver and intestine. Involved in intestinal peptide transport.

抗原: A synthetic peptide of human LI Cadherin

经过测试的应用: WB,IHC-P,IP

推荐稀释比: WB: 1/500-1/1000 IHC: 1/50-1/100 IP: 1/20

种属反应性: Rabbit

克隆性: Rabbit Polyclonal

分子量: Calculated MW: 92 kDa; Observed MW: 120 kDa

亚型: IgG

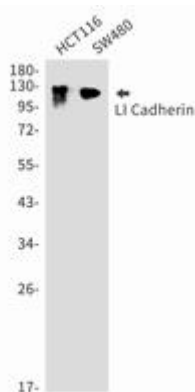
纯化: Affinity Purified

种属反应性: Human

成分: PBS (without Mg²⁺ and Ca²⁺), pH 7.3 containing 50% glycerol, 0.5% BSA and 0.02% sodium azide

研究领域: Cell Biology

储存和运输: Store at -20°C. Avoid repeated freezing and thawing



Western blot analysis of LI Cadherin in HCT116, SW480 lysates using LI Cadherin antibody.



Product Description

Pioneering GTPase and Oncogene Product Development since 2010
