

LEFTY RABBIT PAB

货号: N225127

产品全名: LEFTY 兔多抗

基因符号 LEFTY1; LEFTB; LEFTYB; Left-right determination factor 1; Left-right determination factor B; Protein lefty-1; Protein lefty-B; LEFTY2; EBAF; LEFTA; LEFTYA; TGFB4; PSEC0024; Left-right determination factor 2; Endometrial bleeding-associated factor; Left-right determination factor A; Protein lefty-2; Protein lefty-A; Transforming growth factor beta-4; TGF-beta-4

UNIPROT ID: O75610/O00292

背景: Required for left-right axis determination as a regulator of LEFTY2 and NODAL.

抗原: The antiserum was produced against synthesized peptide derived from the C-terminal region of human LEFTY1/LEFTY2. AA range:301-350

经过测试的应用: WB,ELISA

推荐稀释比: WB: 1/500-1/1000 ELISA: 1/10000

种属反应性: Rabbit

克隆性: Rabbit Polyclonal

分子量: Calculated MW: 41 kDa; Observed MW: 41 kDa

亚型: IgG

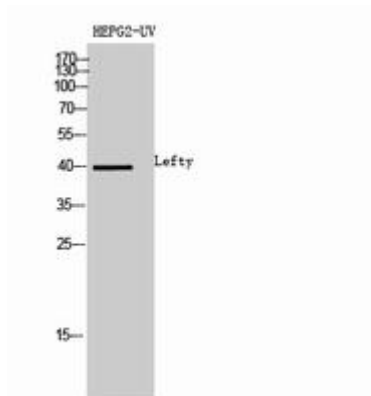
纯化: Affinity Purified

种属反应性: Human,Mouse

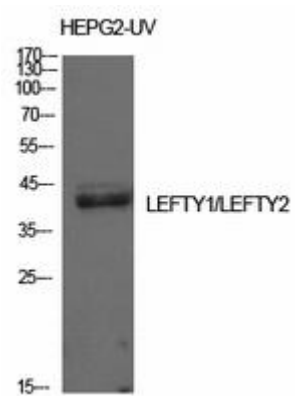
成分: PBS (without Mg²⁺ and Ca²⁺), pH 7.3 containing 50% glycerol, 0.5% BSA and 0.02% sodium azide

研究领域: Stem Cells

储存和运输: Store at -20°C. Avoid repeated freezing and thawing



Western blot analysis of LEFTY in HEPG2UV lysates using Lefty antibody.



Western blot analysis of LEFTY in HepG2UV lysates using LEFTY antibody.