

## KIR2DL2/3 RABBIT PAB

货号: N225183

产品全名: KIR2DL2/3 兔多抗

基因符号 KIR2DL3; CD158B2; KIRCL23; NKAT2; Killer cell immunoglobulin-like receptor 2DL3; CD158 antigen-like family member B2; KIR-023GB; Killer inhibitory receptor cl 2-3; MHC class I NK cell receptor; NKAT2 $\alpha$ ; NKAT2 $\beta$  Natural killer-associated transcript 2; NKAT-2; p58 natural killer cell receptor clone CL-6; p58 NK receptor CL-6; p58.2 MHC class-I-specific NK receptor; CD158b2; KIR2DS2; CD158J; NKAT5; Killer cell immunoglobulin-like receptor 2DS2

**UNIPROT ID:** P43628/P43631

背景: Receptor on natural killer (NK) cells for HLA-C alleles (HLA-Cw1, HLA-Cw3 and HLA-Cw7). Inhibits the activity of NK cells thus preventing cell lysis.

抗原: The antiserum was produced against synthesized peptide derived from the Internal region of human KIR2DL3/KIR2DS2. AA range:131-180

经过测试的应用: WB,ELISA

推荐稀释比: WB: 1/500-1/1000 ELISA: 1/10000

种属反应性: Rabbit

克隆性: Rabbit Polyclonal

分子量: Calculated MW: 38 kDa; Observed MW: 38 kDa

亚型: IgG

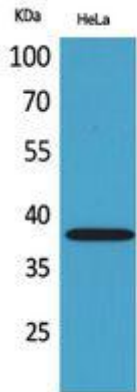
纯化: Affinity Purified

种属反应性: Human

成分: PBS (without Mg<sup>2+</sup> and Ca<sup>2+</sup>), pH 7.3 containing 50% glycerol, 0.5% BSA and 0.02% sodium azide

研究领域: Immunology

储存和运输: Store at -20°C. Avoid repeated freezing and thawing



Western blot analysis of KIR2DL2/3 in HeLa lysates using KIR2DL2/3 antibody.