

ISLET 1 RABBIT PAB

货号: N226047

产品全名: Islet 1 兔多抗

基因符号 ISL1; Insulin gene enhancer protein ISL-1; Islet-1

UNIPROT ID: P61371

背景: ISL1 (ISL1 transcription factor, LIM/homeodomain) is a member of the LIM/homeodomain family of transcription factors. It binds to the enhancer region of the insulin gene, among others, and may play an important role in regulating insulin gene expression. It is central to the development of pancreatic cell lineages and may also be required for motor neuron generation. Islet-1 expression defines cardiac progenitor cell populations and is required for normal cardiac development and asymmetry.

抗原: A synthetic peptide of human Islet 1

经过测试的应用: WB, ICC/IF, FC, IP

推荐稀释比: WB: 1/500-1/1000 IF: 1/50-1/200 IP: 1/20 FC: 1/50-1/100

种属反应性: Rabbit

克隆性: Rabbit Polyclonal

分子量: Calculated MW: 39 kDa; Observed MW: 39 kDa

亚型: IgG

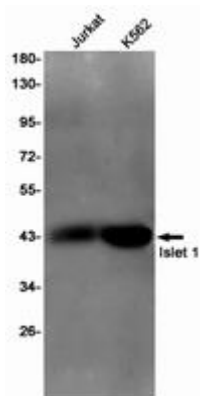
纯化: Affinity Purified

种属反应性: Human

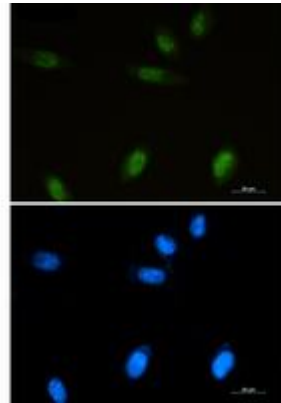
成分: PBS (without Mg²⁺ and Ca²⁺), pH 7.3 containing 50% glycerol, 0.5% BSA and 0.02% sodium azide

研究领域: Neuroscience

储存和运输: Store at -20°C. Avoid repeated freezing and thawing



Western blot analysis of Islet 1 in Jurkat, K562 lysates using Islet 1 antibody.



Immunocytochemistry analysis of Islet 1 (green) in SH-SY5Y using Islet 1 antibody, and DAPI (blue).