

INTEGRIN LINKED ILK RABBIT MAB

货号: N262418

产品全名: Integrin Linked ILK 兔单克隆抗体

基因符号 ILK; ILK1; ILK2; Integrin-linked protein kinase; 59 kDa
serine/threonine-protein kinase; ILK-1; ILK-2; p59ILK

UNIPROT ID: Q13418

背景: Integrin-linked kinases (ILKs) couple integrins and growth factors to downstream pathways involved in cell survival, cell cycle control, cell-cell adhesion and cell motility. ILK functions as a scaffold bridging the extracellular matrix (ECM) and growth factor receptors to the actin cytoskeleton through interactions with integrin, PINCH (which links ILK to the RTKs via Nck2), CH-ILKBP and affixin.

抗原: A synthetic peptide of human Integrin linked ILK

经过测试的应用: WB,IP

推荐稀释比: WB: 1/500-1/1000 IP: 1/20

种属反应性: Rabbit

克隆性: Rabbit Monoclonal

克隆编号: R01-7F8

分子量: Calculated MW: 51 kDa; Observed MW: 51 kDa

亚型: IgG

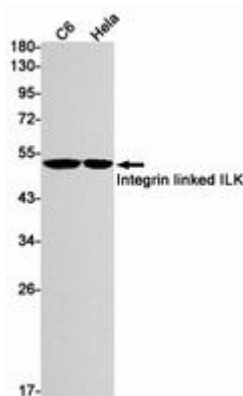
纯化: Affinity Purified

种属反应性: Human, Mouse and Rat

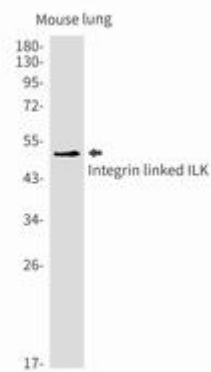
成分: PBS (without Mg²⁺ and Ca²⁺), pH 7.3 containing 50% glycerol, 0.5% BSA and 0.02% sodium azide

研究领域: Signal Transduction

储存和运输: Store at -20°C. Avoid repeated freezing and thawing



Western blot analysis of Integrin linked ILK in C6, HeLa lysates using Integrin linked ILK antibody.



Western blot analysis of Integrin linked ILK in mouse lung lysates using Integrin Linked ILK antibody.