

INSULIN RABBIT PAB

货号: N225223

产品全名: Insulin 兔多抗

基因符号 Insulin [Cleaved into: Insulin B chain; Insulin A chain]

UNIPROT ID: P01308

背景: Insulin decreases blood glucose concentration. It increases cell permeability to monosaccharides, amino acids and fatty acids. It accelerates glycolysis, the pentose phosphate cycle, and glycogen synthesis in liver.

抗原: Synthetic peptide from human protein at AA range: 30-70

经过测试的应用: IHC-P,ELISA

推荐稀释比: IHC: 1/50-1/100 ELISA: 1/10000

种属反应性: Rabbit

克隆性: Rabbit Polyclonal

分子量: -

亚型: IgG

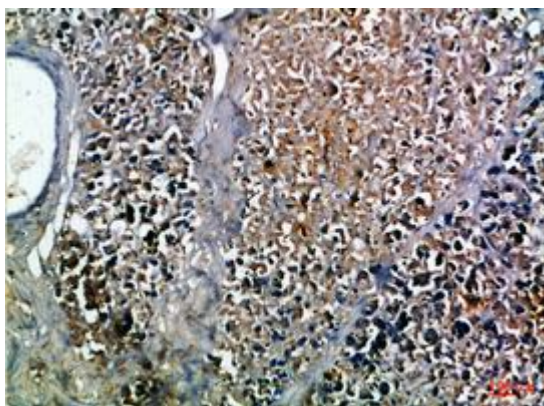
纯化: Affinity Purified

种属反应性: Human, Mouse and Rat

成分: PBS (without Mg²⁺ and Ca²⁺), pH 7.3 containing 50% glycerol, 0.5% BSA and 0.02% sodium azide

研究领域: Signal Transduction

储存和运输: Store at -20°C. Avoid repeated freezing and thawing



Immunohistochemistry analysis of paraffin-embedded Human pancreas using Insulin antibody. High-pressure and temperature Sodium Citrate pH 6.0 was used for antigen retrieval.



Product Description

Pioneering GTPase and Oncogene Product Development since 2010
