

## ILK RABBIT PAB

货号: N226058

产品全名: ILK 兔多抗

基因符号 ILK; ILK1; ILK2; Integrin-linked protein kinase; 59 kDa  
serine/threonine-protein kinase; ILK-1; ILK-2; p59ILK

**UNIPROT ID:** Q13418

**背景:** Integrin-linked kinases (ILKs) couple integrins and growth factors to downstream pathways involved in cell survival, cell cycle control, cell-cell adhesion and cell motility. ILK functions as a scaffold bridging the extracellular matrix (ECM) and growth factor receptors to the actin cytoskeleton through interactions with integrin, PINCH (which links ILK to the RTKs via Nck2), CH-ILKBP and affixin.

**抗原:** A synthetic peptide of human Integrin linked ILK

**经过测试的应用:** WB, ICC/IF, FC

**推荐稀释比:** WB: 1/500-1/1000 IF: 1/50-1/200 FC: 1/50-1/100

**种属反应性:** Rabbit

**克隆性:** Rabbit Polyclonal

**分子量:** Calculated MW: 51 kDa; Observed MW: 51 kDa

**亚型:** IgG

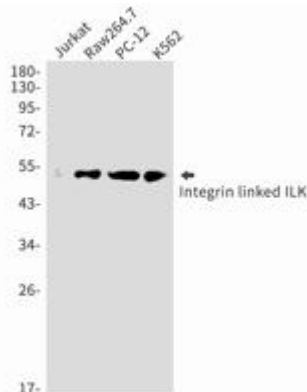
**纯化:** Affinity Purified

**种属反应性:** Human, Mouse and Rat

**成分:** PBS (without Mg<sup>2+</sup> and Ca<sup>2+</sup>), pH 7.3 containing 50% glycerol, 0.5% BSA and 0.02% sodium azide

**研究领域:** Signal Transduction

**储存和运输:** Store at -20°C. Avoid repeated freezing and thawing



Western blot analysis of Integrin linked ILK in Jurkat, Raw264.7, PC-12, K562 lysates using ILK antibody.



# Product Description

Pioneering GTPase and Oncogene Product Development since 2010

---