

IL-1 RECEPTOR ACCESSORY PROTEIN RABBIT MAB

货号: N263383

产品全名: IL-1 Receptor Accessory Protein 兔单克隆抗体

基因符号 IL-1 Receptor Accessory Protein; IL1R3; C3orf13; IL-1RAcP

UNIPROT ID: Q9NPH3

背景: Interleukin 1 induces synthesis of acute phase and proinflammatory proteins during infection, tissue damage, or stress, by forming a complex at the cell membrane with an interleukin 1 receptor and an accessory protein. This gene encodes the interleukin 1 receptor accessory protein. The protein is a necessary part of the interleukin 1 receptor complex which initiates signalling events that result in the activation of interleukin 1-responsive genes. Alternative splicing of this gene results in two transcript variants encoding two different isoforms, one membrane-bound and one soluble. The ratio of soluble to membrane-bound forms increases during acute-phase induction or stress.

抗原: Recombinant protein of human IL-1RAcP

经过测试的应用: WB,IP

推荐稀释比: WB: 1/500-1/1000 IP: 1/20

种属反应性: Rabbit

克隆性: Rabbit Monoclonal

克隆编号: R05-3B8

分子量: Calculated MW: 65 kDa; Observed MW: 78 kDa

亚型: IgG

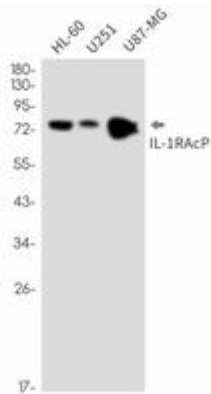
纯化: Affinity Purified

种属反应性: Human

成分: PBS (without Mg²⁺ and Ca²⁺), pH 7.3 containing 50% glycerol, 0.5% BSA and 0.02% sodium azide

研究领域: Immunology

储存和运输: Store at -20°C. Avoid repeated freezing and thawing



Western blot analysis of IL-1RAcP in HL-60, U251, U87-MG lysates using IL-1 Receptor Accessory Protein antibody.