

HPDL RABBIT MAB

货号: N262360

产品全名: HPDL 兔单克隆抗体

基因符号 4-hydroxyphenylpyruvate dioxygenase like; GLOXD1; 4-HPPD-L

UNIPROT ID: Q96IR7

背景: May have dioxygenase activity.

抗原: A synthetic peptide of human HPDL

经过测试的应用: WB,IP

推荐稀释比: WB: 1/500-1/1000 IP: 1/20

种属反应性: Rabbit

克隆性: Rabbit Monoclonal

克隆编号: R08-5K5

分子量: Calculated MW: 39 kDa; Observed MW: 39 kDa

亚型: IgG

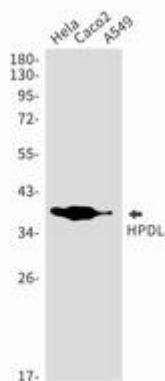
纯化: Affinity Purified

种属反应性: Human

成分: PBS (without Mg²⁺ and Ca²⁺), pH 7.3 containing 50% glycerol, 0.5% BSA and 0.02% sodium azide

研究领域: Signal Transduction

储存和运输: Store at -20°C. Avoid repeated freezing and thawing



Western blot analysis of HPDL in Hela, Caco2, A549 lysates using HPDL antibody.