

HLA A RABBIT MAB

货号: N262338

产品全名: HLA A 兔单克隆抗体

基因符号 Aw-68; HLA class I histocompatibility antigen; A-28 alpha chain; MHC class I antigen A*68; HLA-A; MHC class I antigen HLA A heavy chain

UNIPROT ID: P04439

背景: Major histocompatibility complex (MHC) molecules form an integral part of the immune response system. They are cell-surface receptors that bind peptides and present them to T lymphocytes. HLA-A, -B and -C encode membrane anchored heavy chains which heterodimerize with a light chain (b-2-Microglobulin) to form MHC-I. Polymorphisms yield hundreds of HLA-A, -B and -C alleles.

抗原: A synthetic peptide of human HLA A

经过测试的应用: WB,IHC-F,IHC-P,ICC/IF,IP

推荐稀释比: WB: 1/500-1/1000 IHC: 1/50-1/100 IF: 1/50-1/200 IP: 1/20

种属反应性: Rabbit

克隆性: Rabbit Monoclonal

克隆编号: R05-5H7

分子量: Calculated MW: 41 kDa; Observed MW: 41 kDa

亚型: IgG

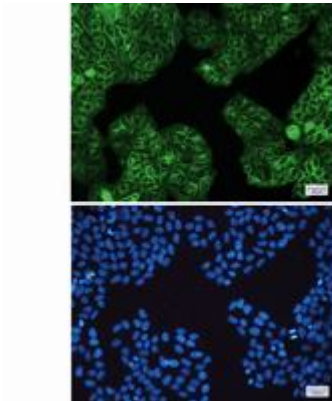
纯化: Affinity Purified

种属反应性: Human

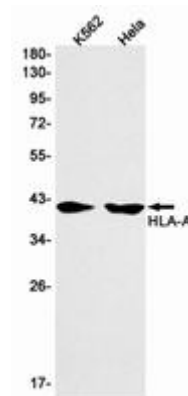
成分: PBS (without Mg²⁺ and Ca²⁺), pH 7.3 containing 50% glycerol, 0.5% BSA and 0.02% sodium azide

研究领域: Immunology

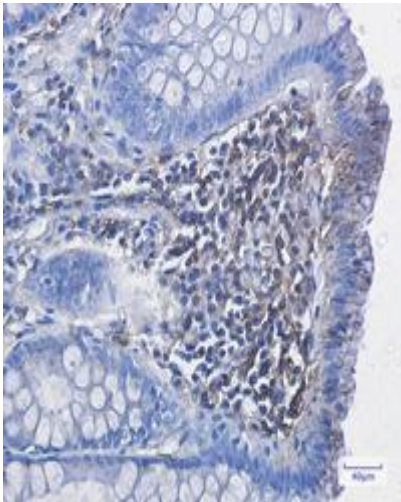
储存和运输: Store at -20°C. Avoid repeated freezing and thawing



Immunocytochemistry analysis of HLA A (green) in HeLa using HLA A antibody, and DAPI (blue)



Western blot analysis of HLA A in K562, HeLa lysates using HLA A antibody.



Immunohistochemistry analysis of paraffin-embedded Human colon cancer using HLA A antibody. High-pressure and temperature Sodium Citrate pH 6.0 was used for antigen retrieval.