

## HEXOKINASE I RABBIT MAB

货号: N262323

产品全名: Hexokinase I 兔单克隆抗体

基因符号 HK1; Hexokinase-1; Brain form hexokinase; Hexokinase type I; HK I

**UNIPROT ID:** P19367

**背景:** Hexokinases I, II, and III are associated with the outer mitochondrial membrane and are critical for maintaining an elevated rate of aerobic glycolysis in cancer cells (Warburg Effect) in order to compensate for the increased energy demands associated with rapid cell growth and proliferation.

**抗原:** A synthetic peptide of human Hexokinase 1

**经过测试的应用:** WB,IHC-F,IHC-P,ICC/IF

**推荐稀释比:** WB: 1/500-1/1000 IHC: 1/50-1/100 IF: 1/50-1/200

**种属反应性:** Rabbit

**克隆性:** Rabbit Monoclonal

**克隆编号:** R02-4A8

**分子量:** Calculated MW: 102 kDa; Observed MW: 102 kDa

**亚型:** IgG

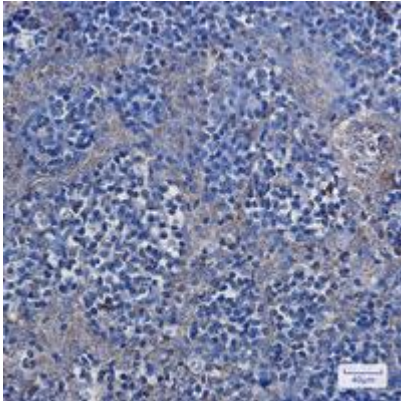
**纯化:** Affinity Purified

**种属反应性:** Human, Mouse and Rat

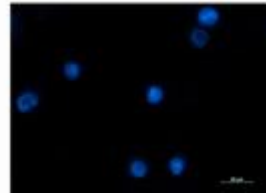
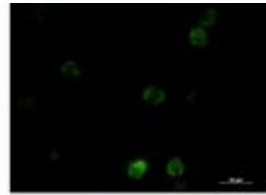
**成分:** PBS (without Mg<sup>2+</sup> and Ca<sup>2+</sup>), pH 7.3 containing 50% glycerol, 0.5% BSA and 0.02% sodium azide

**研究领域:** Cardiovascular

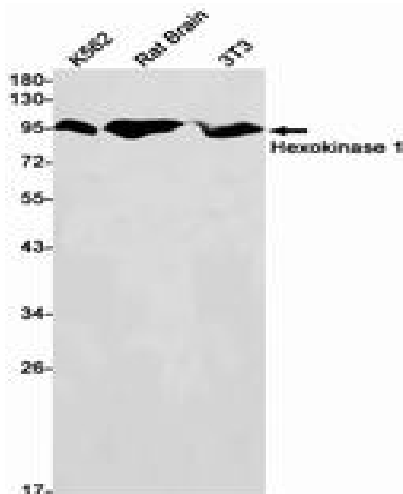
**储存和运输:** Store at -20°C. Avoid repeated freezing and thawing



Immunohistochemistry analysis of paraffin-embedded Human tonsil using Hexokinase I antibody. High-pressure and temperature Sodium Citrate pH 6.0 was used for antigen retrieval.



Immunocytochemistry analysis of Hexokinase I (green) in K562 using Hexokinase I antibody, and DAPI (blue).



Western blot analysis of Hexokinase I in K562, rat Brain, 3T3 lysates using Hexokinase I antibody.