

## GSK3 BETA RABBIT MAB

货号: N261696

产品全名: GSK3 beta 兔单克隆抗体

基因符号 GSK3B; Glycogen synthase kinase-3 beta; GSK-3 beta;  
Serine/threonine-protein kinase GSK3B

**UNIPROT ID:** P49841

**背景:** Glycogen synthase kinase-3 (GSK3) is a proline-directed serine-threonine kinase that was initially identified as a phosphorylating and inactivating glycogen synthase. GSK3B is involved in energy metabolism, neuronal cell development, and body pattern formation. In skeletal muscle, it contributes to insulin regulation of glycogen synthesis by phosphorylating and inhibiting GYS1 activity and hence glycogen synthesis.

**抗原:** A synthetic peptide of human GSK3 beta

**经过测试的应用:** WB, IHC-P

**推荐稀释比:** WB: 1/500-1/1000 IHC: 1/50-1/100

**种属反应性:** Rabbit

**克隆性:** Rabbit Monoclonal

**克隆编号:** R09-7G8

**分子量:** Calculated MW: 47 kDa; Observed MW: 47 kDa

**亚型:** IgG

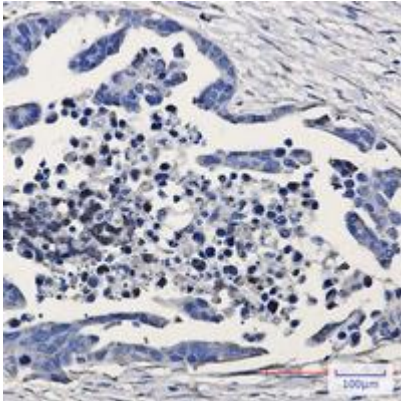
**纯化:** Affinity Purified

**种属反应性:** Human, Rat, Hamster

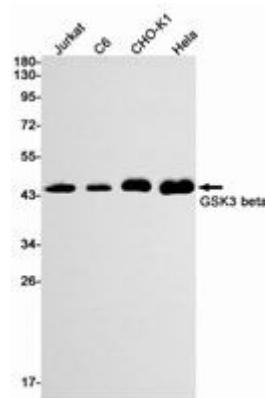
**成分:** PBS (without Mg<sup>2+</sup> and Ca<sup>2+</sup>), pH 7.3 containing 50% glycerol, 0.5% BSA and 0.02% sodium azide

**研究领域:** Neuroscience

**储存和运输:** Store at -20°C. Avoid repeated freezing and thawing



Immunohistochemistry analysis of paraffin-embedded Human Cholangiocarcinoma using GSK3 beta antibody. High-pressure and temperature Sodium Citrate pH 6.0 was used for antigen retrieval.



Western blot analysis of GSK3 beta in Jurkat, C6, CHO-K1, HeLa lysates using GSK3 beta antibody.