

GRK2 RABBIT MAB

货号: N263350

产品全名: GRK2 兔单克隆抗体

基因符号 GRK2; BARK1; FLJ16718; BETA-ARK1; ADRBK1

UNIPROT ID: P25098

背景: GRK2 kinase activity and cellular localization are tightly regulated by interactions with activated receptors, G-beta and G-gamma subunits, adaptor proteins, phospholipids, caveolin and calmodulin, as well as by phosphorylation. PKC phosphorylation enhances GRK2 activity by promoting its membrane localization and by abolishing the inhibitory association of calmodulin.

抗原: A synthetic peptide of human GRK2

经过测试的应用: WB,IP

推荐稀释比: WB: 1/500-1/1000 IP: 1/20

种属反应性: Rabbit

克隆性: Rabbit Monoclonal

克隆编号: R01-6I5

分子量: Calculated MW: 80 kDa; Observed MW: 80 kDa

亚型: IgG

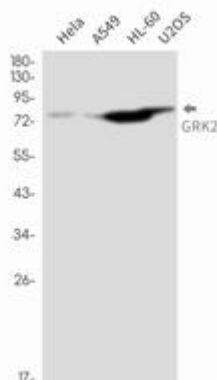
纯化: Affinity Purified

种属反应性: Human

成分: PBS (without Mg²⁺ and Ca²⁺), pH 7.3 containing 50% glycerol, 0.5% BSA and 0.02% sodium azide

研究领域: Neuroscience

储存和运输: Store at -20°C. Avoid repeated freezing and thawing



Western blot analysis of GRK2 in HeLa, A549, HL-60, U2OS lysates using GRK2 antibody.



Product Description

Pioneering GTPase and Oncogene Product Development since 2010
