

## GRANZYME B RABBIT PAB

货号: N225242

产品全名: Granzyme B 兔多抗

基因符号 Granzyme B; Cathepsin G-like 1; CTSGLI; Lymphocyte protease; Fragmentin-2; Granzyme-2; Human lymphocyte protein; SECT; GZMB; CGLI; CSPB; CTLAI; GRB

**UNIPROT ID:** P10144

**背景:** This enzyme is necessary for target cell lysis in cell-mediated immune responses. It cleaves after Asp. Seems to be linked to an activation cascade of caspases (aspartate-specific cysteine proteases) responsible for apoptosis execution. Cleaves caspase-3, -7, -9 and 10 to give rise to active enzymes mediating apoptosis.

**抗原:** Synthesized peptide derived from human Granzyme B Polyclonal

**经过测试的应用:** WB,IHC-P,ELISA

**推荐稀释比:** WB: 1/500-1/1000 IHC: 1/50-1/100 ELISA: 1/10000

**种属反应性:** Rabbit

**克隆性:** Rabbit Polyclonal

**分子量:** Calculated MW: 28 kDa; Observed MW: 40 kDa

**亚型:** IgG

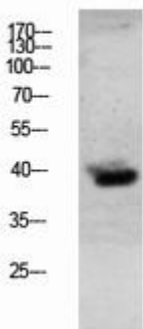
**纯化:** Affinity Purified

**种属反应性:** Human, Mouse and Rat

**成分:** PBS (without Mg<sup>2+</sup> and Ca<sup>2+</sup>), pH 7.3 containing 50% glycerol, 0.5% BSA and 0.02% sodium azide

**研究领域:** Cell Biology

**储存和运输:** Store at -20°C. Avoid repeated freezing and thawing



Western blot analysis of Granzyme B in mouse lung lysates using Granzyme B antibody.



# Product Description

Pioneering GTPase and Oncogene Product Development since 2010

---