

GPD2 RABBIT MAB

货号: N262300

产品全名: GPD2 兔单克隆抗体

基因符号 GDH2; GPDM; mGPDH

UNIPROT ID: P43304

背景: Glycerol-3-phosphate dehydrogenase, mitochondrial

抗原: A synthetic peptide of human GPD2

经过测试的应用: WB,IP

推荐稀释比: WB: 1/500-1/1000 IP: 1/20

种属反应性: Rabbit

克隆性: Rabbit Monoclonal

克隆编号: R02-5B9

分子量: Calculated MW: 81 kDa; Observed MW: 81 kDa

亚型: IgG

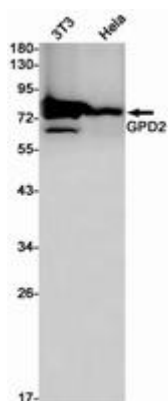
纯化: Affinity Purified

种属反应性: Human, Mouse and Rat

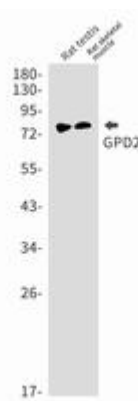
成分: PBS (without Mg²⁺ and Ca²⁺), pH 7.3 containing 50% glycerol, 0.5% BSA and 0.02% sodium azide

研究领域: Tags & Cell Markers

储存和运输: Store at -20°C. Avoid repeated freezing and thawing



Western blot analysis of GPD2 in K562, HeLa lysates using GPD2 antibody.



Western blot analysis of GPD2 in rat testis, rat skeletal muscle lysates using GPD2 antibody.