

GORAB RABBIT PAB

货号: N225182

产品全名: GORAB 兔多抗

基因符号 GORAB; NTKLBPI; SCYL1BPI; RAB6-interacting golgin; N-terminal kinase-like-binding protein 1; NTKL-BPI; NTKL-binding protein 1; hNTKL-BPI; SCY1-like 1-binding protein 1; SCYL1-BPI; SCYL1-binding protein 1

UNIPROT ID: Q5T7V8

背景: This gene encodes a member of the golgin family, a group of coiled-coil proteins localized to the Golgi. The encoded protein may function in the secretory pathway. The encoded protein, which also localizes to the cytoplasm, was identified by interactions with the N-terminal kinase-like protein, and thus it may function in mitosis. Mutations in this gene have been associated with geroderma osteodysplastica.

抗原: The antiserum was produced against synthesized peptide derived from the N-terminal region of human GORAB. AA range:1-50

经过测试的应用: WB,ELISA

推荐稀释比: WB: 1/500-1/1000 ELISA: 1/10000

种属反应性: Rabbit

克隆性: Rabbit Polyclonal

分子量: Calculated MW: 42 kDa; Observed MW: 45 kDa

亚型: IgG

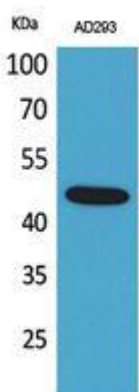
纯化: Affinity Purified

种属反应性: Human, Mouse and Rat

成分: PBS (without Mg²⁺ and Ca²⁺), pH 7.3 containing 50% glycerol, 0.5% BSA and 0.02% sodium azide

研究领域: Signal Transduction

储存和运输: Store at -20°C. Avoid repeated freezing and thawing



Western blot analysis of GORAB in AD293 lysates using GORAB antibody.



Product Description

Pioneering GTPase and Oncogene Product Development since 2010
