

GLYPICAN 1 RABBIT MAB

货号: N261671

产品全名: Glypican 1 兔单克隆抗体

基因符号 glypican

UNIPROT ID: P35052

背景: Cell surface proteoglycan that bears heparan sulfate.

抗原: A synthetic peptide of human Glypican 1/GPC1

经过测试的应用: WB,ICC/IF

推荐稀释比: WB: 1/500-1/1000 IF: 1/50-1/200

种属反应性: Rabbit

克隆性: Rabbit Monoclonal

克隆编号: R03-2E8

分子量: Calculated MW: 62 kDa; Observed MW: 55 kDa

亚型: IgG

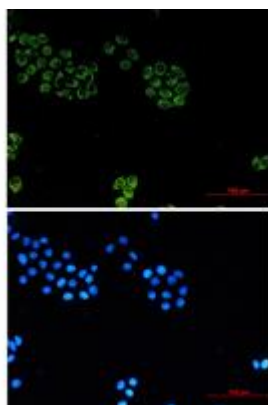
纯化: Affinity Purified

种属反应性: Human

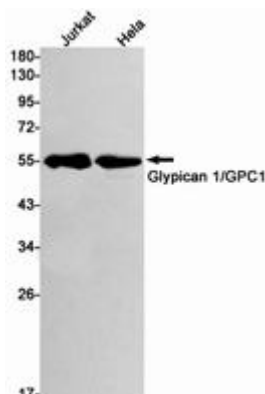
成分: PBS (without Mg²⁺ and Ca²⁺), pH 7.3 containing 50% glycerol, 0.5% BSA and 0.02% sodium azide

研究领域: Neuroscience

储存和运输: Store at -20°C. Avoid repeated freezing and thawing



Immunocytochemistry analysis of Glypican 1/GPC1 (green) in HeLa using Glypican 1/GPC1 antibody, and DAPI (blue)



Western blot analysis of Glypican 1/GPC1 in Jurkat, HeLa lysates using Glypican 1 antibody.



Product Description

Pioneering GTPase and Oncogene Product Development since 2010
