

GLYCOPHORIN C RABBIT MAB

货号: N261640

产品全名: Glycophorin C 兔单克隆抗体

基因符号 GYPC; CD236; CD236R; GE; GPC; GYPD

UNIPROT ID: P04921

背景: This protein is a minor sialoglycoprotein in human erythrocyte membranes. The blood group Gerbich antigens and receptors for Plasmodium falciparum merozoites are most likely located within the extracellular domain.

抗原: A synthetic peptide of human Glycophorin C

经过测试的应用: WB, ICC/IF, IP

推荐稀释比: WB: 1/500-1/1000 IF: 1/50-1/200 IP: 1/20

种属反应性: Rabbit

克隆性: Rabbit Monoclonal

克隆编号: R04-8F4

分子量: Calculated MW: 14 kDa; Observed MW: 43 kDa

亚型: IgG

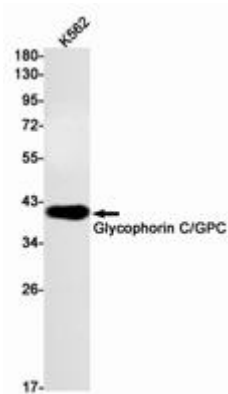
纯化: Affinity Purified

种属反应性: Human

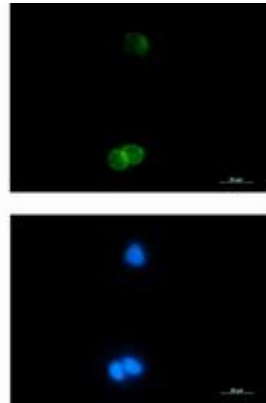
成分: PBS (without Mg²⁺ and Ca²⁺), pH 7.3 containing 50% glycerol, 0.5% BSA and 0.02% sodium azide

研究领域: Cardiovascular

储存和运输: Store at -20°C. Avoid repeated freezing and thawing



Western blot analysis of Glycophorin C/GPC in K562 lysates using Glycophorin C/GPC antibody.



Immunocytochemistry analysis of Glycophorin C (green) in K562 using Glycophorin C antibody, and DAPI (blue).