

## GLYCOGEN SYNTHASE 1 RABBIT MAB

货号: N262288

产品全名: Glycogen Synthase 1 兔单克隆抗体

基因符号 GYS1; GYS; Glycogen [starch] synthase; muscle

**UNIPROT ID:** P13807

背景: Transfers the glycosyl residue from UDP-Glc to the non-reducing end of alpha-1,4-glucan. Allosteric activation by glucose-6-phosphate. Phosphorylation reduces the activity towards UDP-glucose. When in the non-phosphorylated state, glycogen synthase does not require glucose-6-phosphate as an allosteric activator; when phosphorylated it does.

抗原: A synthetic peptide of human Glycogen synthase 1

经过测试的应用: WB,IHC-F,IHC-P,ICC/IF,IP

推荐稀释比: WB: 1/500-1/1000 IHC: 1/50-1/100 IF: 1/50-1/200 IP: 1/20

种属反应性: Rabbit

克隆性: Rabbit Monoclonal

克隆编号: R09-1E5

分子量: Calculated MW: 84 kDa; Observed MW: 84 kDa

亚型: IgG

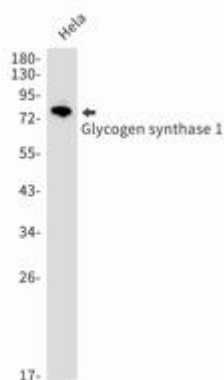
纯化: Affinity Purified

种属反应性: Human

成分: PBS (without Mg<sup>2+</sup> and Ca<sup>2+</sup>), pH 7.3 containing 50% glycerol, 0.5% BSA and 0.02% sodium azide

研究领域: Signal Transduction

储存和运输: Store at -20°C. Avoid repeated freezing and thawing



Western blot analysis of Glycogen synthase 1 in HeLa lysates using Glycogen Synthase 1 antibody.



# Product Description

Pioneering GTPase and Oncogene Product Development since 2010

---