

## GLUTAMINASE RABBIT PAB

货号: N226031

产品全名: Glutaminase 兔多抗

基因符号 Glutaminase kidney isoform; GLS; GLS1; KGA; K-glutaminase; GAM; GAC; Glutaminase C; L-glutamine amidohydrolase

**UNIPROT ID:** O94925

**背景:** Catalyzes the first reaction in the primary pathway for the renal catabolism of glutamine. Plays a role in maintaining acid-base homeostasis. Regulates the levels of the neurotransmitter glutamate in the brain. Isoform 2 lacks catalytic activity. Isoform 1 and isoform 3 are activated by phosphate. Inhibited by BPTES. BPTES binds between subunits and favors dissociation of the tetramer into dimers.

**抗原:** A synthetic peptide of human Glutaminase

**经过测试的应用:** WB,IHC-F,IHC-P,ICC/IF,FC

**推荐稀释比:** WB: 1/500-1/1000 IHC: 1/50-1/100 IF: 1/50-1/200 FC: 1/50-1/100

**种属反应性:** Rabbit

**克隆性:** Rabbit Polyclonal

**分子量:** Calculated MW: 73 kDa; Observed MW: 73,65 kDa

**亚型:** IgG

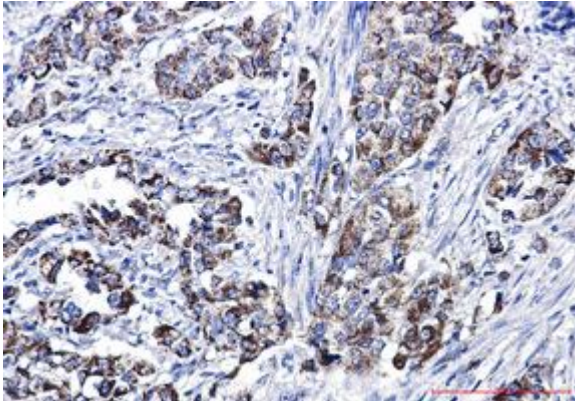
**纯化:** Affinity Purified

**种属反应性:** Human

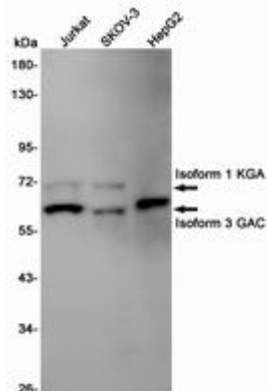
**成分:** PBS (without Mg<sup>2+</sup> and Ca<sup>2+</sup>), pH 7.3 containing 50% glycerol, 0.5% BSA and 0.02% sodium azide

**研究领域:** Neuroscience&Glutamatergic Neurons

**储存和运输:** Store at -20°C. Avoid repeated freezing and thawing



Immunohistochemistry analysis of paraffin-embedded Human lung cancer using Glutaminase antibody. High-pressure and temperature Sodium Citrate pH 6.0 was used for antigen retrieval.



Western blot analysis of Glutaminase1/GLS1 in Jurkat, SKOV-3, HepG2 lysates using Glutaminase antibody.