

## GELSOLIN RABBIT MAB

货号: N262267

产品全名: Gelsolin 兔单克隆抗体

基因符号 ADF; AGEL; Brevin; Gelsolin; Gsn

**UNIPROT ID:** P06396

**背景:** Calcium-regulated, actin-modulating protein that binds to the plus (or barbed) ends of actin monomers or filaments, preventing monomer exchange (end-blocking or capping). It can promote the assembly of monomers into filaments (nucleation) as well as sever filaments already formed. Plays a role in ciliogenesis.

**抗原:** A synthetic peptide of human Gelsolin

**经过测试的应用:** WB,IHC-P,IP

**推荐稀释比:** WB: 1/500-1/1000 IHC: 1/50-1/100 IP: 1/20

**种属反应性:** Rabbit

**克隆性:** Rabbit Monoclonal

**克隆编号:** R06-217

**分子量:** Calculated MW: 86 kDa; Observed MW: 86 kDa

**亚型:** IgG

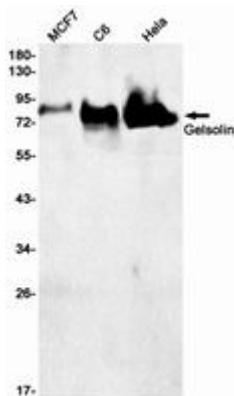
**纯化:** Affinity Purified

**种属反应性:** Human,Rat

**成分:** PBS (without Mg<sup>2+</sup> and Ca<sup>2+</sup>), pH 7.3 containing 50% glycerol, 0.5% BSA and 0.02% sodium azide

**研究领域:** Signal Transduction

**储存和运输:** Store at -20°C. Avoid repeated freezing and thawing



Western blot analysis of Gelsolin in MCF-7, C6, HeLa lysates using Gelsolin antibody.



# Product Description

Pioneering GTPase and Oncogene Product Development since 2010

---